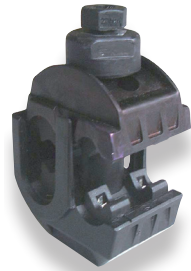


Single pole service connector

1 tap

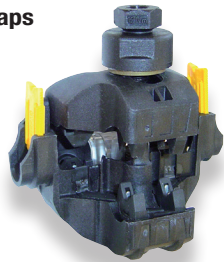


Phase - **K317**

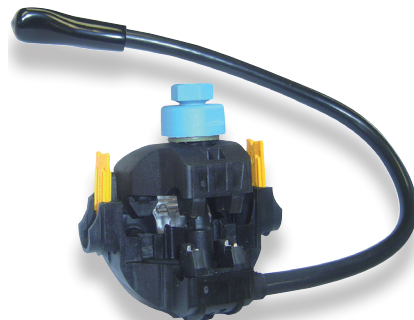


Neutral - **K318**

2 taps



Phase - **K419**



Neutral - **K420**

Application

This connector is designed to establish a tap connection on low voltage underground networks. It is located in underground cast or injected boxes. It can be used on a main cable with paper or synthetic insulation of type:

- circular or sectoral,
- aluminium,
- stranded or solid core.

Description

- Connection is ensured through insulation piercing technology simultaneously on main and tap lines.
- The K419 and K420 models can be used for connecting 2 taps with identical or different sections.
- The K420 model integrates an earth system conductor.
- Connectors are fully insulated (IP2X protection degree). Bodies are made of synthetic materials to make live-line work safe.
- The ergonomics has been designed to meet the specific constraints of underground work.
- Tightening efficiency is ensured by a shear head screw.

The components are tested for 200 cycles according to the **NF C 63-061** and 1 000 cycles electrical ageing according to the **NF EN 61238-1** standards.

Code	Designation	Main Capacities (mm ²)	Tap Capacities (mm ²)	Weight (kg)	Sales unit
K317	CONNECTOR CBS/CS 240	50-240	10-35	0.230	3
K318	CONNECTOR CBS NEUTRAL/CS	50-95	10-35	0.135	1
K419	CONNECTOR CB2p/CS 240	50-240	2x10-35	0.200	3
K420	CONNECTOR CB2p NEUTRAL/CS	50-95	2x10-35	0.310	1

Accessory



K001

End cap is used in addition to the K317 and K318 connector in order to insulate the end of the tap cable.

Code	Designation	Weight (kg)	Sales unit
K001	BLACK FLEXIBLE END CAP 10-50M	0.003	20